



Design Book

LAKESIDE COTTAGE

The Entry

CONCEPT BOARD, AND ROOM
LAYOUT

The Entry

CONCEPT BOARD



The Entry

CONCEPT BOARD



WALL AND TRIM
BM CHANTILLY LACE



WOODEN KEY HOOKS



CEILING LIGHT



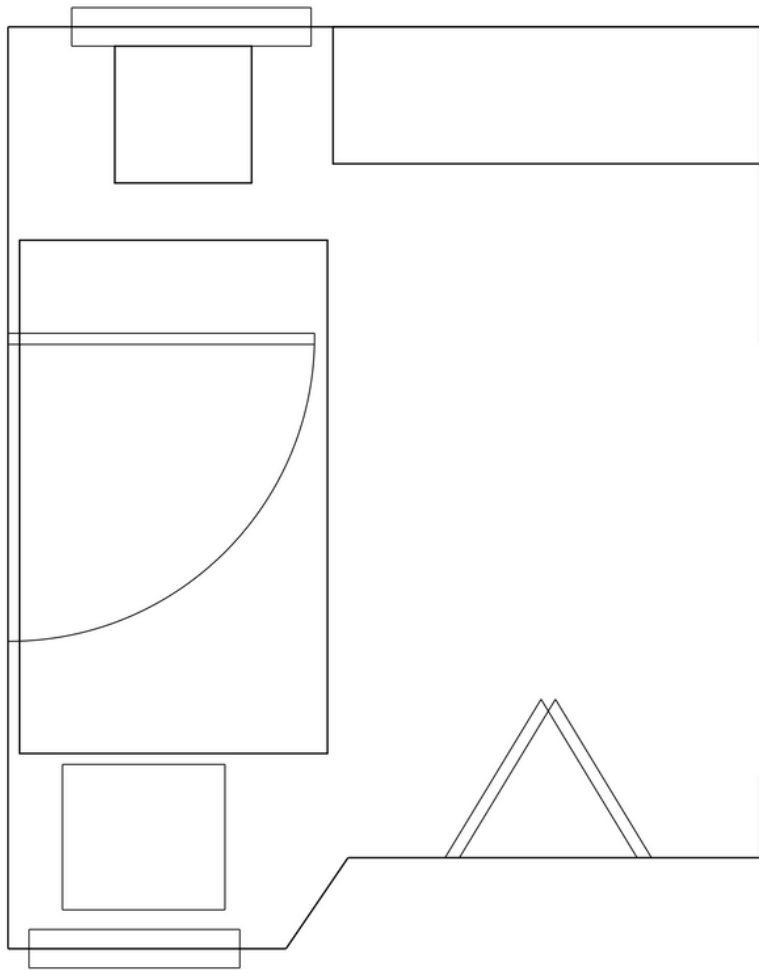
ENTRY HARDWARE



CORNER BENCH

The Entry

ROOM LAYOUT



The Living Room

CONCEPT BOARD, AND ROOM
LAYOUT

The Living Room

CONCEPT BOARD 1



The Living Room

CONCEPT BOARD



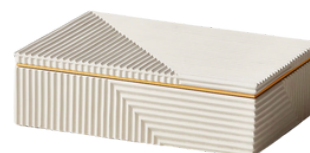
The Living Room

CONCEPT BOARD

COZY THROWS



BM CHANTILLY LACE



DECORATIVE BOX FOR
ON-TOP COFFEE TABLE
OR CONSOLE

COFFEE TABLE STORAGE



CHAIR PILLOWS



LOVESEAT PILLOWS

The Living Room

CONCEPT BOARD



FLUSH MOUNT FOR
MAIN FLOOR CEILING LIGHT



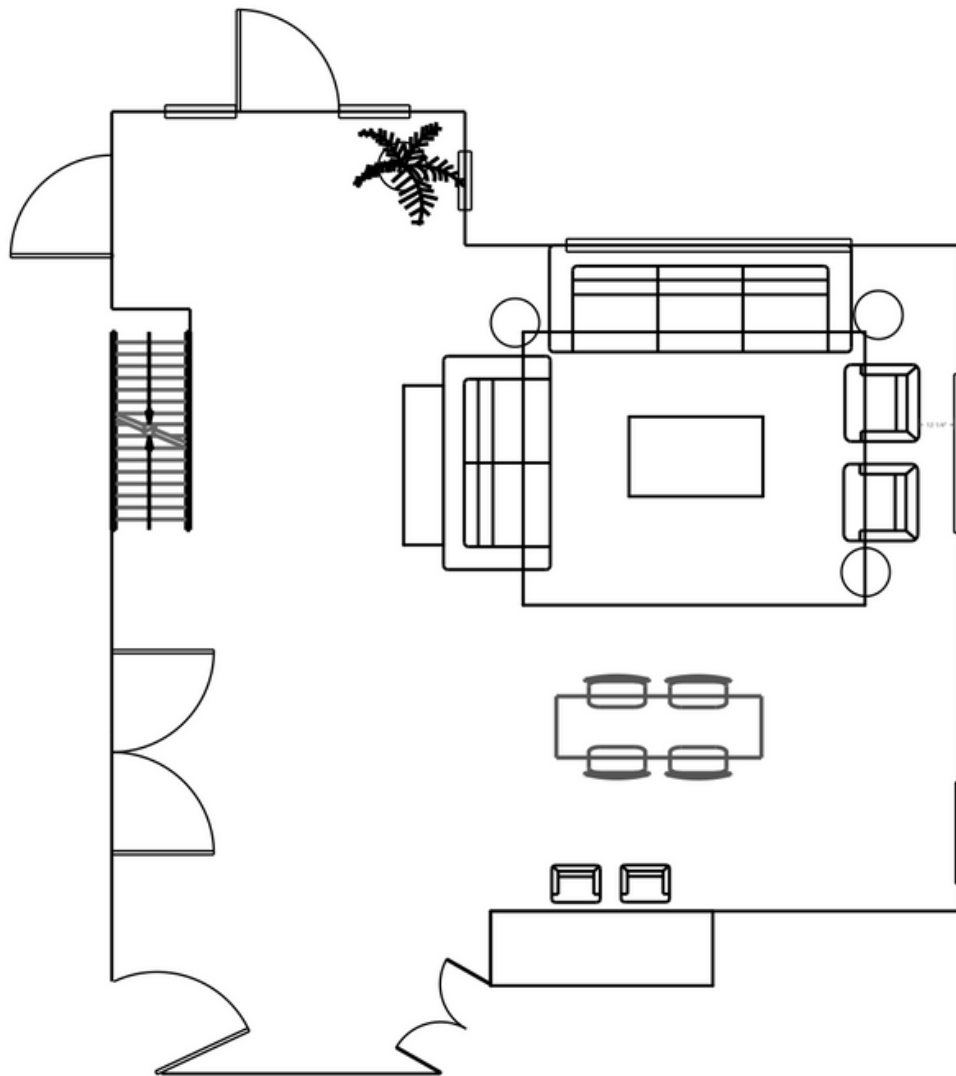
FAUX PLANT FOR CORNER
BY THE BACK DOOR



24X36" ART FOR ABOVE RADIATOR

The Living Room

ROOM LAYOUT



The Dining Room

CONCEPT BOARD, AND ROOM
LAYOUT

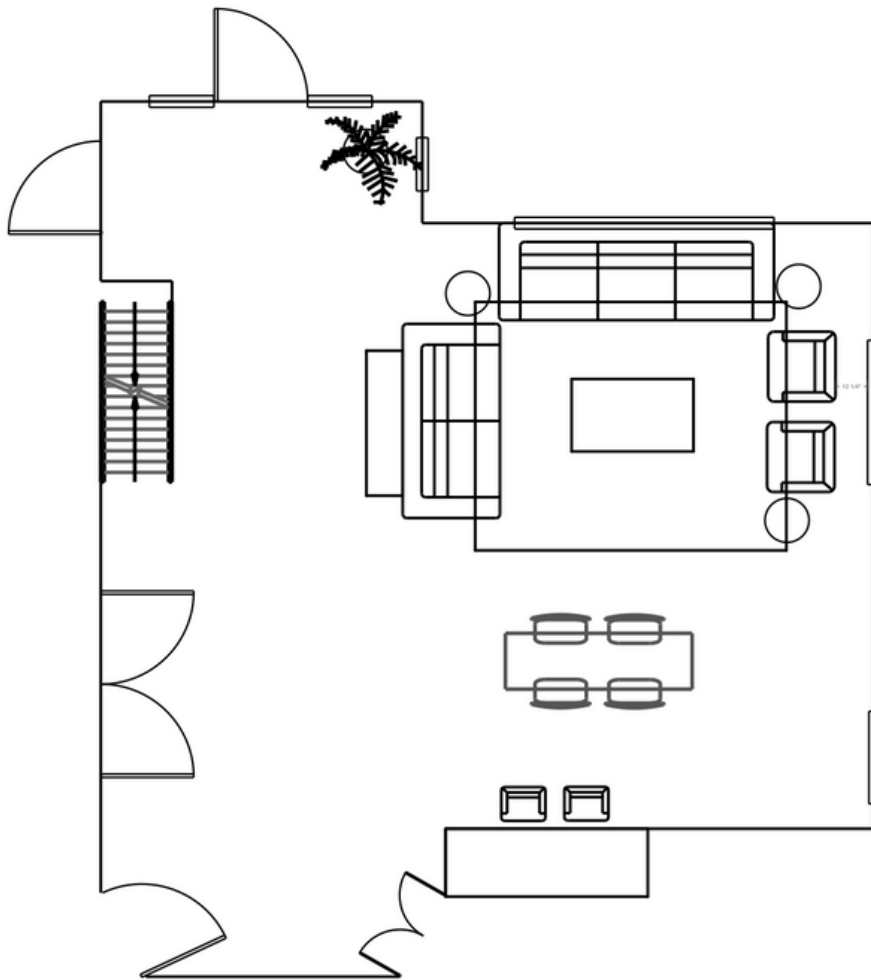
The Dining Room

CONCEPT BOARD



The Dining Room

ROOM LAYOUT



Primary Bedroom

CONCEPT BOARD, AND ROOM
LAYOUT

Primary Bedroom

CONCEPT BOARD 1



Primary Bedroom

CONCEPT BOARD 2



Primary Bedroom

CONCEPT BOARD



CHANTILLY LACE



Primary Bedroom

BEDDING



DUVET COVER SET



SHEETS



THROW PILLOWS

Primary Bedroom

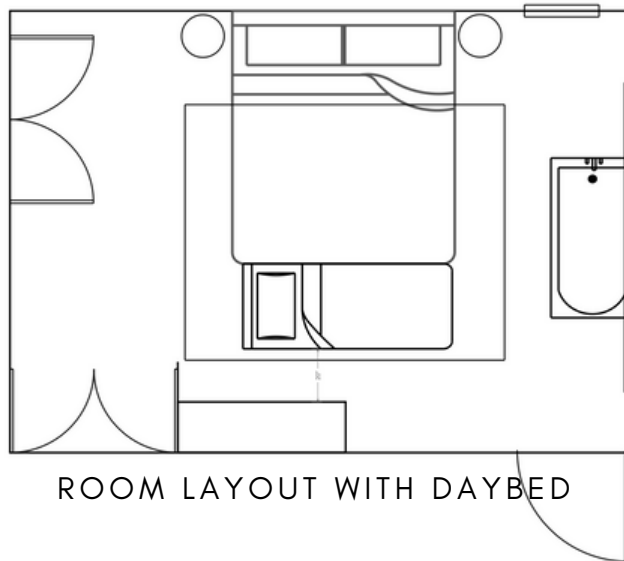
WINDOW TREATMENTS



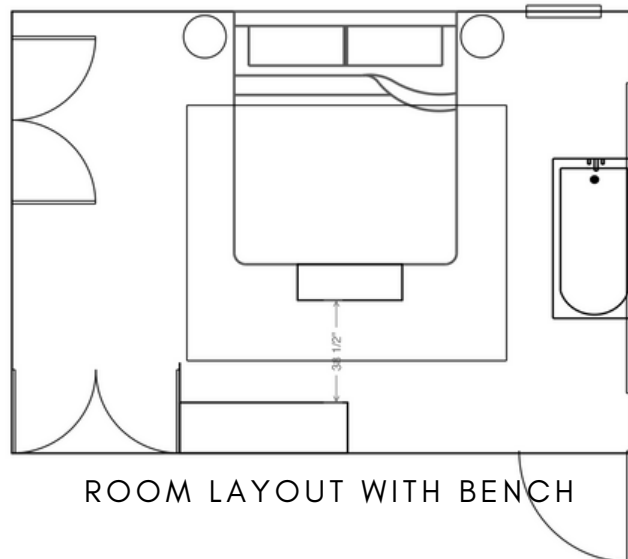
Since this room has a jacuzzi in the middle of it, we recommend two window treatments on each window. The curtains give off a nice soft feeling to the room, and the "top-down, bottom-up" blinds give whoever is staying in the room the ability to have both privacy and light without needing a room divider of some kind. It's a simple clean looking solution that has a variety of options for all your lighting and privacy needs.

Primary Bedroom

ROOM LAYOUT



ROOM LAYOUT WITH DAYBED



ROOM LAYOUT WITH BENCH